



<http://www.canon.com/c-park/en/>



Snowy owl (Bubo scandiacus)

People in Europe and America have long considered the snowy owl as "God of the Mountain"; a symbol of wisdom and trust and a bringer of happiness. In Greek mythology the snowy owl was known as the governor of knowledge and the arts, and in Aesop's fables it is described as having powers of prophecy. It is believed that merely placing pictures or ornaments of owls in corners of the house will welcome good luck into one's home.

As the name suggests, the snowy owl is covered in snow-white feathers. This large species of owl is mainly found in Arctic tundra areas. The snowy owl can rotate its head up to 270 degrees giving it an extremely wide range of vision. White feathers cover its body all the way to its toes, and its short beak is buried beneath feathers on its face. Unlike most other owls, the snowy owl is active during daylight hours. Summer in the Arctic circle features nights of "midnight sun", and the snowy owl, living in open areas such as tundras, grasslands, wetlands, or rocky areas, must hunt for prey from an elevated point with maximum vision of the area. For this reason, snowy owls are often very active during the day, even though hunting is commonly done in the mornings or evening. Their prey consists mostly of small rodents, but they occasionally feed on other birds too.

Assembly Instructions

- 1) Carefully cut out the parts.
- 2) Make mountain folds and valley folds along the dotted lines, as indicated by the directions.
- 3) Assemble the parts in the order shown by the numbers on the glue tabs. (Read the assembly instruction for more information.)
- 4) Attach the parts in order. (Read the assembly instruction for more information.)
- 5) Your Paper craft model is finished.

Tools

Scissors, glue (We recommend craft glue.), rubber band

Caution

Glue, scissors and other tools may be dangerous to young children so be sure to keep them out of the reach of young children.

Notation Key



Scissors line



Cut in line



Glue up to this line



Mountain fold



Valley fold

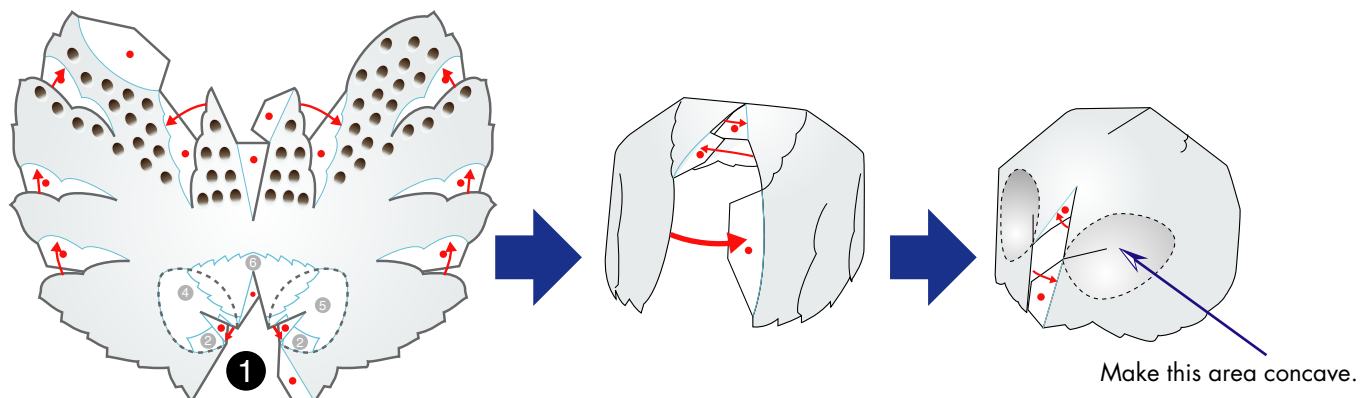


Glue spot

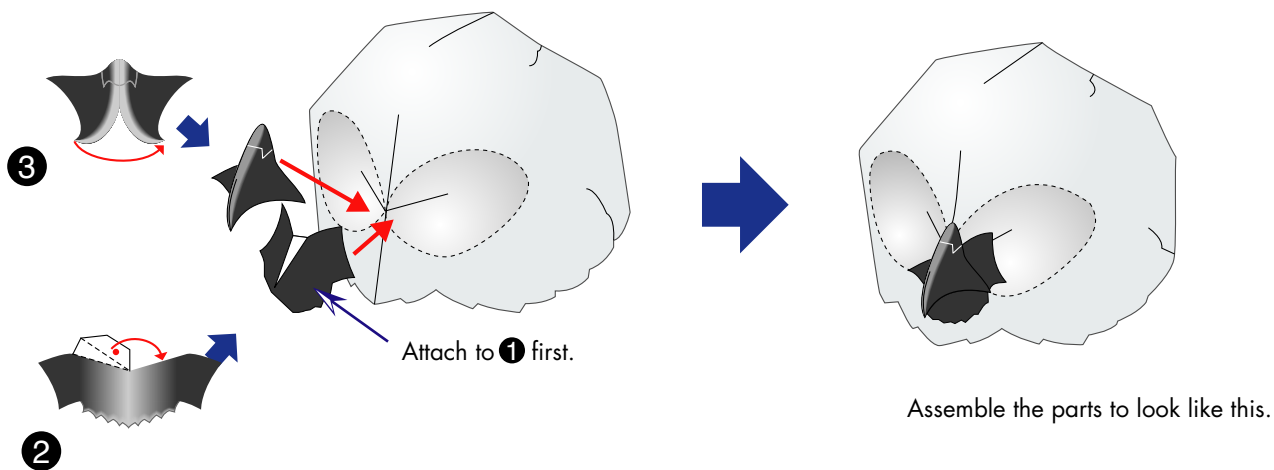


Glue reverse side

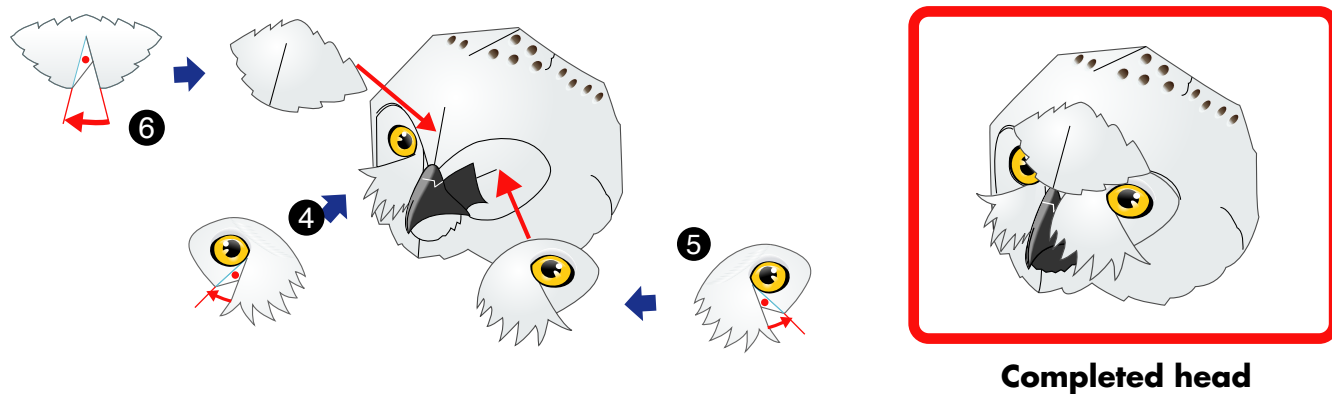
Assemble ①.



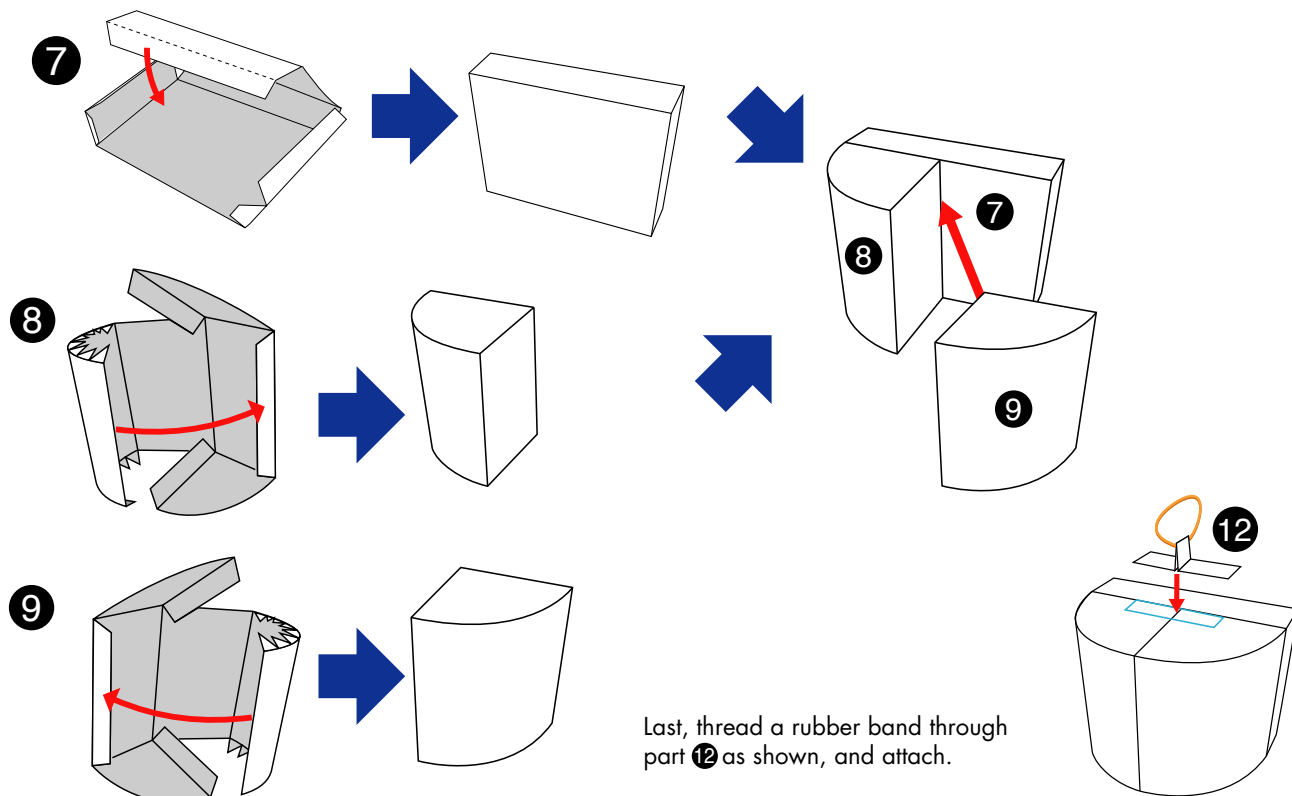
Assemble ② and ③, and attach them to the head, starting with ②.



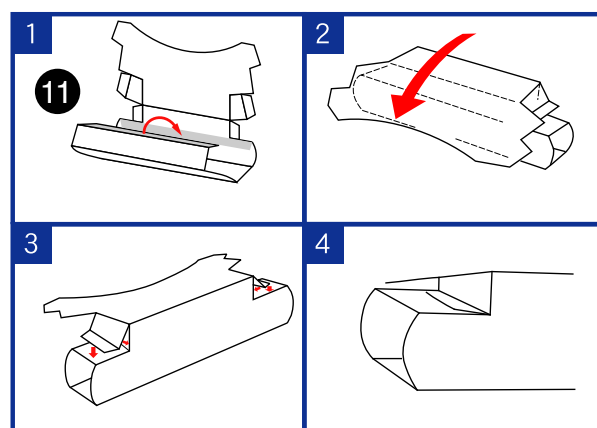
Assemble ④, ⑤, and ⑥, and attach them to the head, starting with ④.



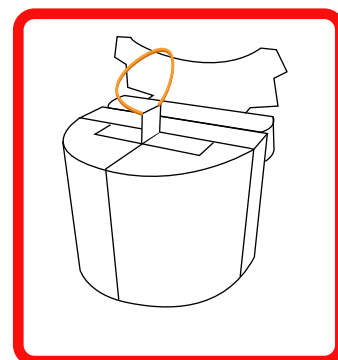
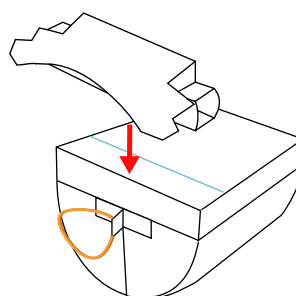
Make the internal frame of the body.



Assemble 11, and attach it to the internal frame.

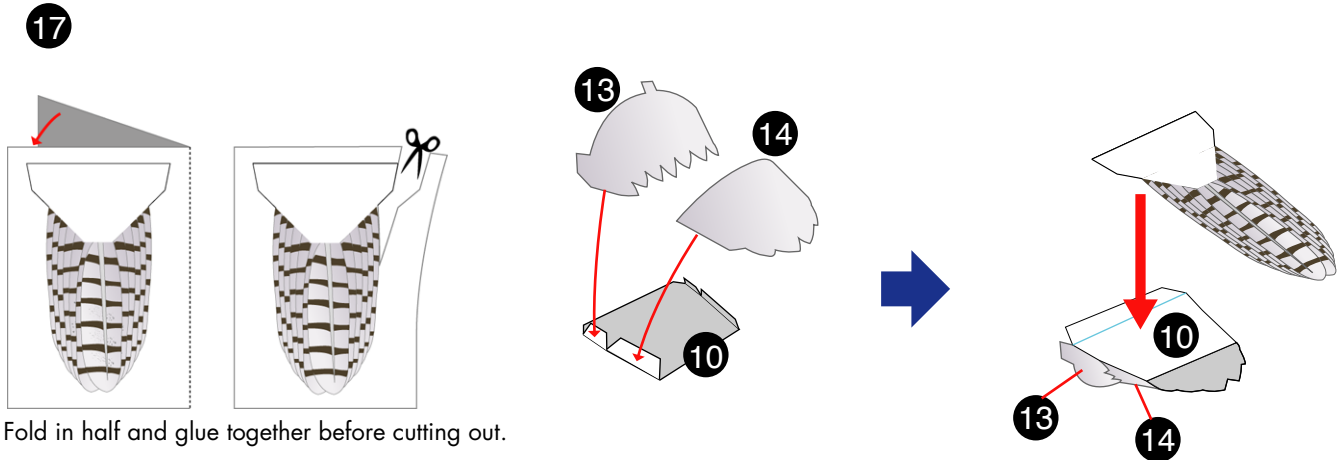


The shape of 11 is very complicated, so take extra care when assembling it, following the assembly order shown in the above diagram.

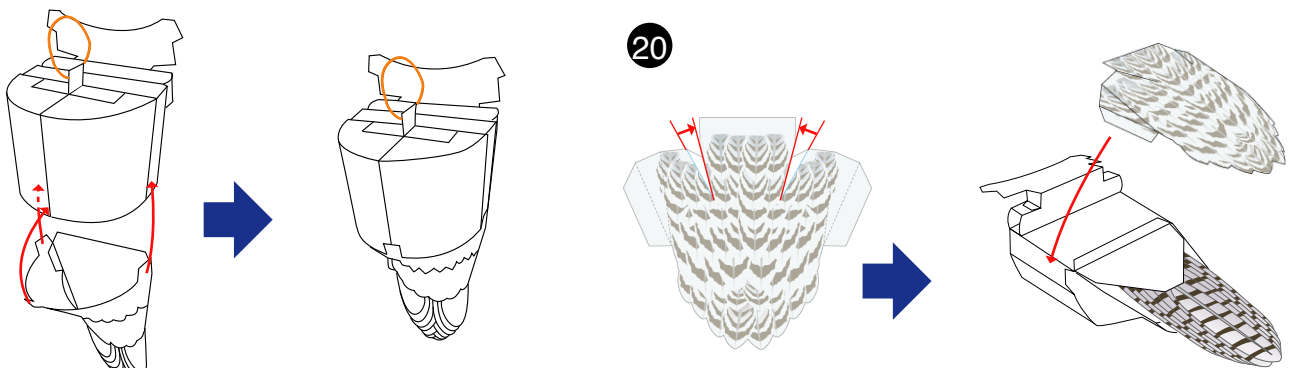


Completed internal frame

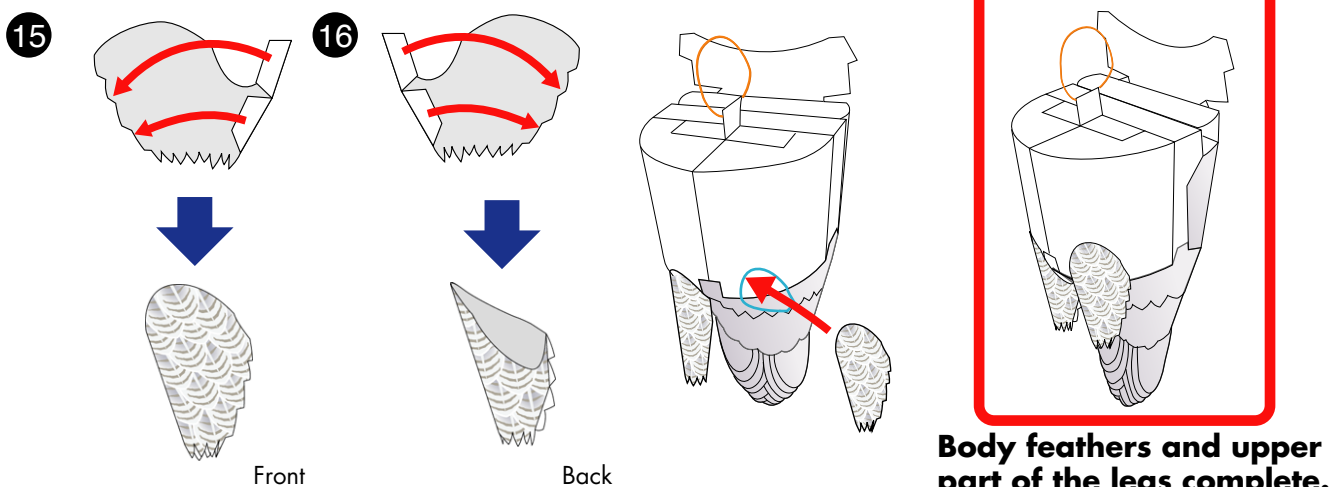
Assemble 10, 13, and 14, and 17 attach them to the body.



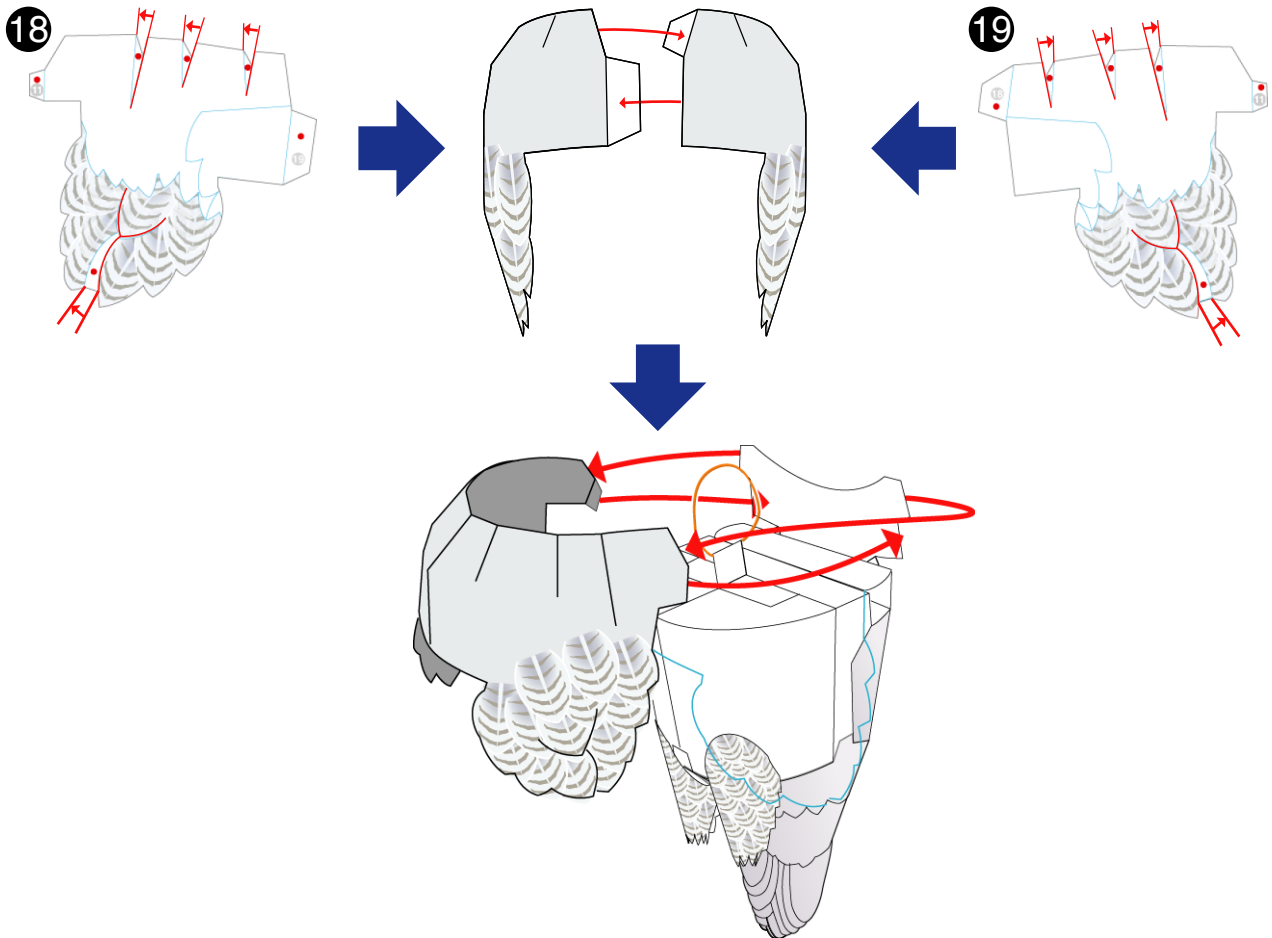
Glue the tail feathers to the internal frame, and glue to 20.



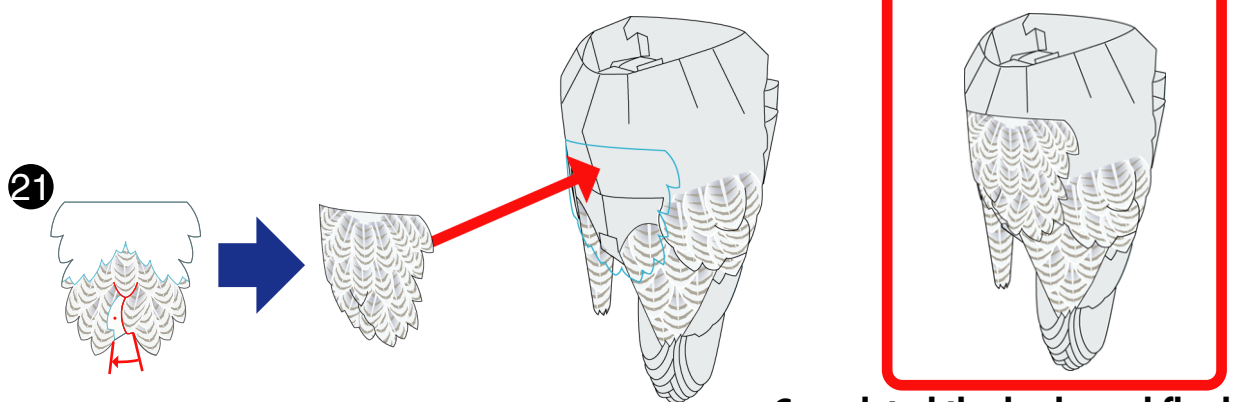
Assemble 15 and 16, and attach them to the internal frame.



Assemble ⑮ and ⑯, glue them together and attach them to the body.

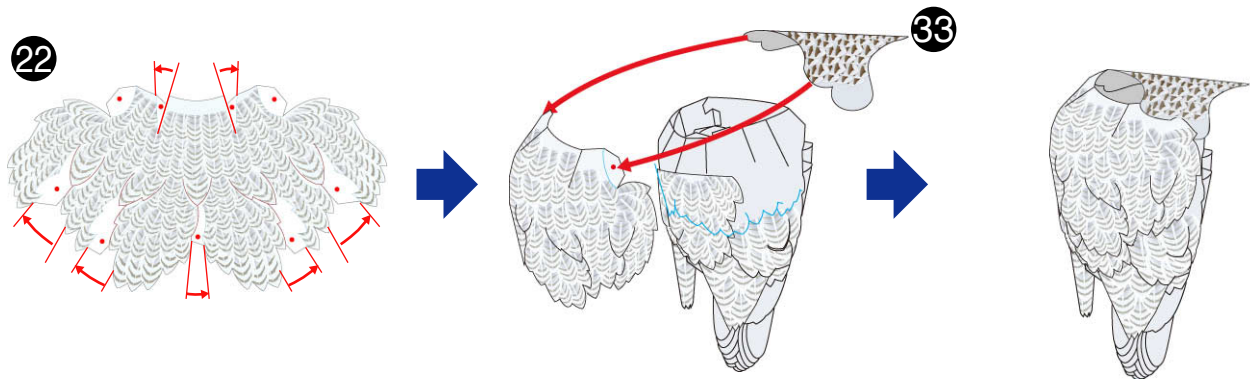


Assemble ⑰, glue to the center of the body.

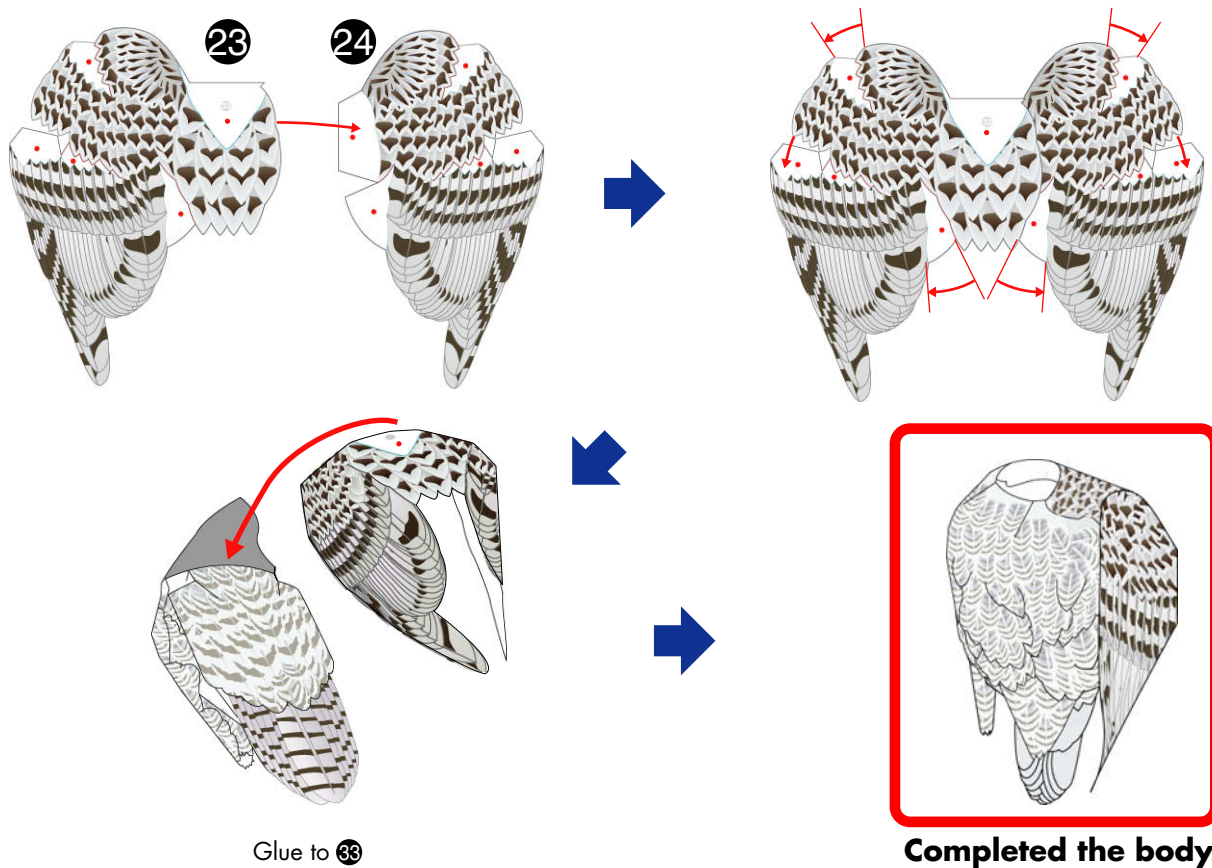


Completed the body and flanks

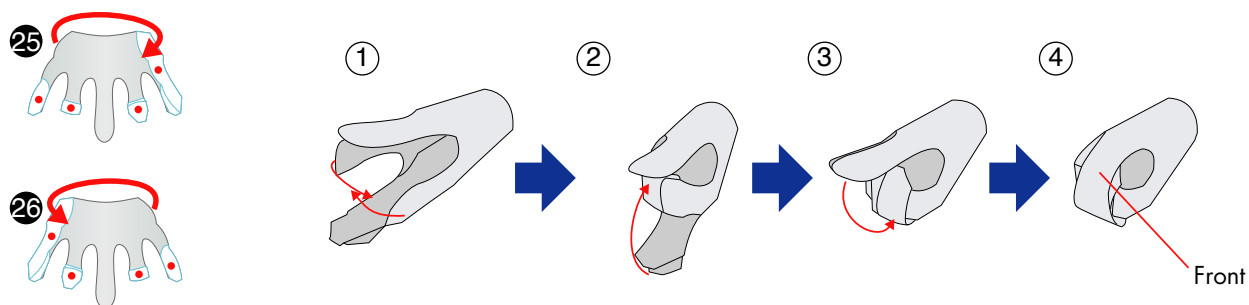
Assemble ②②, glue it together to ③③, and attach them to the body.



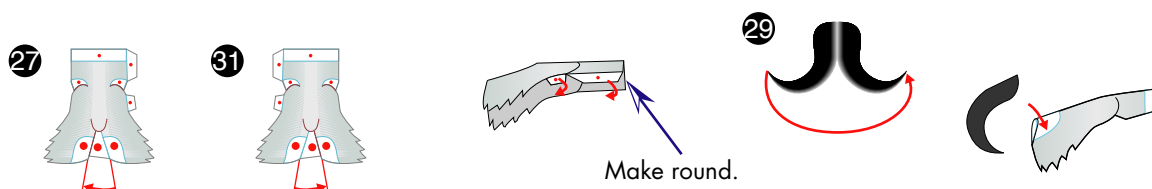
Glue ②③ and ②④ together, and assemble them, and attach them to the body.



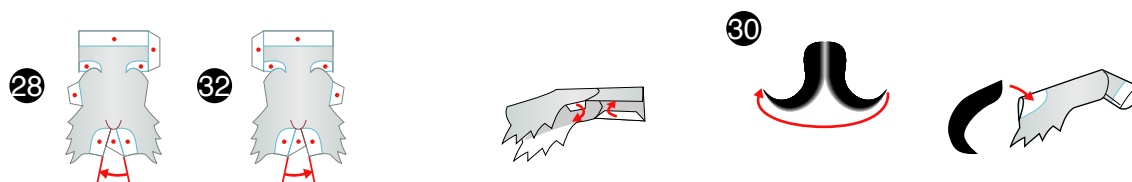
Assemble 25 and 26.



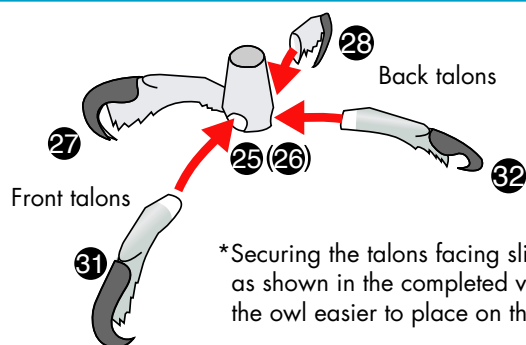
Assemble 27 and 31, and glue 29 to make the front talons.



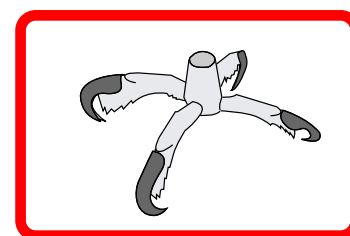
Assemble 28 and 32, and glue 30 to make the back talons.



Insert 27, 28, 31, and 32 into 25/26, secure them with glue and the legs are complete.

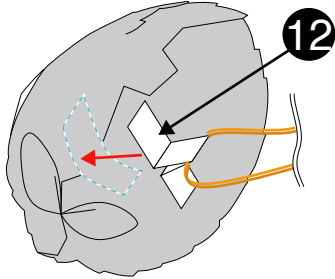


*Securing the talons facing slightly downwards as shown in the completed view, will make the owl easier to place on the stand.

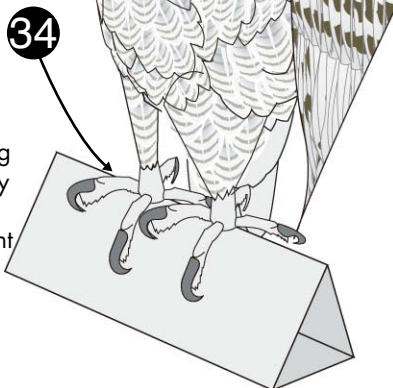
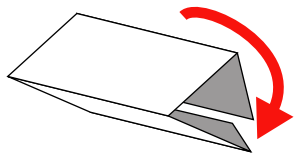


Completed the legs

Use ⑫ to attach the head to the body, and insert the legs into the body.



Thread the rubber band from the body through ⑫, and attach ⑫ to the area on the inside of the head indicated in the diagram. Attach the legs to the area of the body indicated in the diagram, and your snowy owl is complete.



Assemble the stand by folding part ③④, and perch the snowy owl on top. The owl's head can be turned to face different directions as you please.



Complete!